

Red Angus Reference Sires



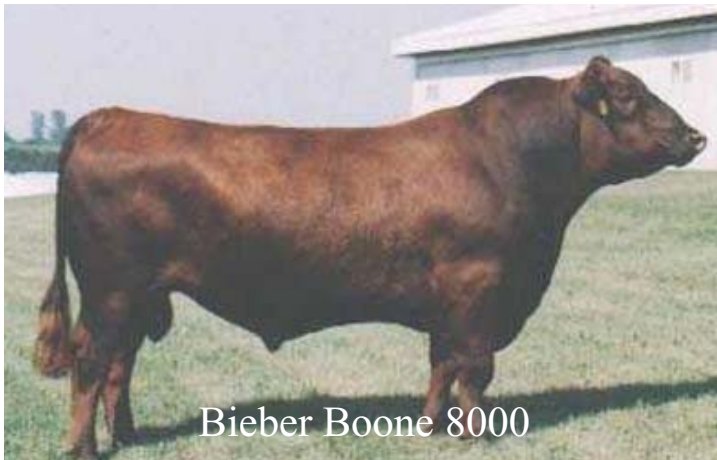
Bieber Boone 6927

BIEBER BOONE 8000

04/02/2000 RAB8000 % 1A Red Angus
 LMAN ROBIN HOOD 1174B
 BIEBER STRAIGHT ARROW
 BIEBER BELGA 4464
 BIEBER BOONE 6927 BJR TOPPER 830-23L
 BIEBER TINA 5243
 BIEBER 5303-K589
 T3 CHIEF 2887
 BIEBER JUDGE 4970
 BIEBER SALLY 2424
 BIEBER QUE 6007 BIEBER REDLABEL3977
 BIEBER QUE 4928
 BIEBER 3149

	BW	WW	YW	Milk	TM	Stay	BF	REA	MAR
EPD	-1.8	38	67	13	32	11	-0.01	-0.13	.11
Wts.	92	703	1286						
Ratio	101	108	109	CED	4	CETM	2	HPG	

Bieber Boone was purchased by Accelerated Genetics in our 2001 production sale. Boone 8000 is out of a cowline that is noted for its low birth, fast growth and moderate mature size. This makes Boone 8000 incredibly stacked for those traits with his sire Boone 6927 stacked on the top side. 8000 is in the top 25% for growth trait and Stayability. 8000 was one of the high scanning bulls for IMF and his Marbling EPD put him in the top 20% of the breed. His first progeny averages run well against his sires and we expect his him to offer a lot to the industry with genetics that are highly acceptable to an industry interested in profitable beef production.



Bieber Boone 8000

BIEBER BOONE 6927

03/14/1998 RAB6927 100% 1A Red Angus
 LMAN KING ROB 8621
 LMAN ROBIN HOOD 1174B
 LEACHMAN PRILARK
 BIEBER STRAIGHT ARROW BIEBER DESIGN 1325-082
 BIEBER BELGA 4464
 BJR BELGA 677-8120
 RCN CANYON CHIEF
 BJR TOPPER 830-23L
 RED LUK NU-HONEY 23L
 BIEBER TINA 5243 PRF CHIEFLINE K589
 BIEBER 5303-K589
 ARA 6F 5303

	BW	WW	YW	Milk	TM	Stay	BF	REA	MAR
EPD	-1.5	40	70	16	36	13	-0.01	-0.28	0
Wts.	83	811	1304						
Ratio	89	124	116	CED	0	CETM	2	HPG	

Boone offers outstanding curvebending genetics in the breed. He is in the top 25% of the breed for birthweight, top 10% for weaning weight, and top 15% for yearling weight growth. He is also in the top half of the bred for Milk and top 15% for Stayability. His pedigree combines one of the best Topper daughters to have ever walked on our ranch with Straight Arrow a premier growth sire. We find the Straight Arrow daughter to be a great set of cows, unfortunately due to his untimely death we don't have near enough of them. Boone calves held true to form being an average BW Ratio of 95 and an average WW ratio of 102 over the whole group. Boone sold to Bull Hill Farms in our 1999 sale and later sold to GENEX and is currently in their lineup. Several of his great sons sell March 6, 2003.

BIEBER RED PEPPER 7931

03/23/2000 RAB7931 % 1A Red Angus
 LMAN ROBIN HOOD 1174B
 BIEBER STRAIGHT ARROW
 BIEBER BELGA 4464
 BIEBER BOONE 6927 BJR TOPPER 830-23L
 BIEBER TINA 5243
 BIEBER 5303-K589
 BUF CRK HOBO 1961
 SBCC TOP HOBO
 RRM TRANELA RH06
 BIEBER GALEE 5249 BIEBER DESIGN2778
 BIEBER GALEE 4494
 BIEBER GALLE 3152

	BW	WW	YW	Milk	TM	Stay	BF	REA	MAR
EPD	-1.4	37	64	18	36	13	-0.01	-0.14	0.11
Wts.	86	769	1395						
Ratio	94	118	114	CED	7	CETM	4	HPG	

Red Pepper is a sire selected for use on heifers and has produced calves that warrant every discriminating buyer's attention. His dam is an outstanding Top Hobo daughter out of the famed Galee cowline that Brent Lonker designated as a cowline that stood out in our herd. We have known for years and that they were outstanding cows but never found a sire to use out of that cow line until Red Pepper. We sold Red Pepper last summer after using him on heifers and the buyer made a wise decision. Red Pepper is in the top 25% of the breed for BW, WW, YW, Calving ease, top 10% for Stayability and top 15% for Marbling.

2003 Spring RAAA Averages

BW: 0.7 WW: 29 YW: 51 Milk: 15 TM: 30 Stay: 9 BF: -0.01 REA: -0.05 MAR: 0.04 CED: 4 CETM: 3 HPG: 7

Red Angus Reference Sires

BIEBER BOLERO 7716

02/07/2000 RAB7716 % 1A Red Angus
 LMAN KING ROB 8621
 LMAN ROBIN HOOD 1174B
 LEACHMAN PRILARK
 BIEBER STRAIGHT ARROW BIEBER DESIGN 1325-082
 BIEBER BELGA 4464
 BJR BELGA 677-8120
 LCC HEAVEN OR BUST1000B
 MESSMER GABRIEL 9538
 NODAK LADY CHIEF
 BIEBER FLOWER 7048 T3 CHIEF 2887
 BIEBER FLOWER 4599
 BIEBER FLOWER 3319

	BW	WW	YW	Milk	TM	Stay	BF	REA	MAR
EPD	-1.3	33	68	15	31	14	-0.02	0.04	-0.05
Wts.	66	601	1341						
Ratio	92	96	116	CED	3	CETM	5	HPG	

Bieber Bolero is one of the few Bieber bulls that got to go to the show ring. More than 99.9% of our seedstock herd is shown on the pastures and ranges of McPherson county. Come see us and we will give you a personal show. Bolero has been shown and sold at last year's Nebraska Cattlemen's Classic to Houssermann Red Angus of Nebraska and was Champion Red Angus bull, and also named supreme champion bull. Scott Prill tells us that on top of everything else his disposition is excellent. His calves have the same look about them and will attract attention. His well balanced EPD's, and faultless pedigree make him an easy buy.

BIEBER BIG MAC 6393

02/14/1997 RAB6393 100% 1A Red Angus
 LEACHMAN ROBUST 7222
 LMAN KING ROB 8621
 LEACHMAN ELEANOR
 LMAN ROBIN HOOD 1174B LEACHMAN EBV 3531
 LEACHMAN PRILARK
 LEACHMAN PRILARK6374
 BIEBER CHIEFTON 2803
 T3 CHIEF 2887
 BIEBER HANNAH 2887
 BIEBER SIERRA 5516 BIEBER DESIGN 1325-082
 BIEBER SIERRA 3235
 BIEBER SIERRA 2145

	BW	WW	YW	Milk	TM	Stay	BF	REA	MAR
EPD	-3.2	36	69	18	36	14	0	-0.04	0.13
Wts.	72	647	1307						
Ratio	92	105	112	CED	7	CETM	10	HPG	

Big Mac 6393 is another sire whose pedigree just won't quit producing great progeny. Big Mac was lost this past spring with a broken leg in the bull pasture after we had just brought him back from Dale Faylor. Dale felt Big Mac was one of the best sires he has used. His birthweight is in the top 10% of all active sires with WW growth in the top 25% and YW growth in the top 15% with milk in the 35 % range and Stayability in the top 5% of all active sires. Put his Marbling in the top 15% of the breed and he is really hard to beat. Big Mac's dam is an outstanding cow that we put in our ET program last year. She has produced several great sons including Bieber Hot Rock 7946 another reference sire, and a couple of other outstanding son that sold in the front part of the sale. Her heifer calf last year was the one of the best. As you can see Big Mac is backed up by lots of prepotent genetics and his progeny are no exception.



Bieber Sundance H655

BIEBER SUNDANCE H655

09/21/1998 SOLCH655 100% 1A Red Angus
 LEACHMAN ROBUST 7222
 LMAN KING ROB 8621
 LEACHMAN ELEANOR
 LMAN ROBIN HOOD 1174B LEACHMAN EBV 3531
 LEACHMAN PRILARK
 LEACHMAN PRILARK6374
 GWG EXCEL 920
 MABES EXCEL 171
 RCN NEXA-S 439
 BIEBER MIMI 4879 BIEBER DESIGN 1325-082
 BIEBER MIMI 4227
 BIEBER MIMI 3418

	BW	WW	YW	Milk	TM	Stay	BF	REA	MAR
EPD	-5.6	21	42	16	27	11	-0.01	0	0.14
Wts.	64	599	966						
Ratio	ET	ET	ET	CED	12	CETM	10	HPG	

As we said last year we promised Sundance is heifer bull deluxe and has proven it through becoming a BW trait leader. He is an excellent source for low BW and good looking genetics. His dam sold to Oates Land and Cattle and has cranked out Sons that have become top sires in other programs. His older bother, Red Robber, sold to Accelerated Genetics, another sold to the RA Brown Ranch who has become a growth and carcass leader. His first daughters are getting ready to calve and they look like great females and will be extremely versatile with very low BW, average growth, and outstanding maternal traits.



Bieber Big Mac 6393

2003 Spring RAAA Averages

BW: 0.7 WW: 29 YW: 51 Milk: 15 TM: 30 Stay: 9 BF: -0.01 REA: -0.05 MAR: 0.04 CED: 4 CETM: 3 HPG: 7

Red Angus Reference Sires



Bieber Titan 6894

BIEBER TITAN 6894

02/23/1998 RAB6894 100% 1A Red Angus
 RCN DYNAMO 614
 LEACHMAN ROBUST 7222
 LEACHMAN DUCHESS6463
 LCHMN VIGOR 1000D LEACHMAN CHIEF 911-8670
 LMAN VICILA B1127
 LEACHMAN VICILA 5962
 LEACHMAN BETTER HVY8041
 LMAN NONE BETTER 9604
 LEACHMAN ELEANOR
 BIEBER KANNA 5983 ANKONIAN CLASSIC
 BIEBER KANNA 4518
 RAB KANNA 555-236

	BW	WW	YW	Milk	TM	Stay	BF	REA	MAR
EPD	0.6	46	77	14	37	9	-0.01	0.06	-0.07
Wts.	79	698	1264						
Ratio	99	113	117	CED	8	CETM	12	HPG	

Titan is in the top 10% of the all active sires for WW and YW growth. His progeny have much to offer for the practical cowman. They are thick good doing cattle with practical mature size. Titan was sold to Alta South America, and is now being collected for use in the South American market. We have many daughters and are confident that his son, 7946, listed next will carry his contribution in our program to the next level.



Matt Schaefer,
Bieber Red Angus cow boss.

BIEBER TOPPER 7701

01/31/2000 RAB7701 100% 1A Red Angus
 RCN CANYON CHIEF
 BJR TOPPER 830-23L
 RED LUK NU-HONEY 23L
 BIEBER TOPPER 2476 RAB ABE LINCOLN
 BIEBER CHIEF 1936
 FTF 6F 7020
 LMAN ROBIN HOOD 1174B
 BIEBER STRAIGHT ARROW
 BIEBER BELGA 4464
 BIEBER LASS 6935 SBCC TOP HOBO
 BIEBER LASS 5496
 BIEBER LASS 4715

	BW	WW	YW	Milk	TM	Stay	BF	REA	MAR
EPD	2.7	45	79	16	39	14	-0.01	0.13	0
Wts.	62	682	1328						
Ratio	87	109	115	CED	-2	CETM	14	HPG	

Topper 7701 has a pedigree that is stacked for maternal traits with Topper 2476, Straight Arrow and Top Hobo. Both Dad and I rate this bull is one of the best we use this summer. He is a long correct bull that has maternal written all over him. His birth weight dictates that he be use predominantly on cows but his growth put him in the top 10% of the breed. His Stayablity is in the top 5% of the breed. 7701 sire Topper 2476 sold to Cliff Haugen, the famed founder of Bootjack Ranches. Cliff produce some great progeny from this bull that went on to work well for many breeders across the breed.

BIEBER HOT ROCK 7946

03/26/2000 RAB7946 100% 1A Red Angus
 LEACHMAN ROBUST 7222
 LCHMN VIGOR 1000D
 LMAN VICILA B1127
 BIEBER TITAN 6894 LMAN NONE BETTER 9604
 BIEBER KANNA 5983
 BIEBER KANNA 4518
 BIEBER CHIEFTON 2803
 T3 CHIEF 2887
 BIEBER HANNAH 2887
 BIEBER SIERRA 5516 BIEBER DESIGN 1325-082
 BIEBER SIERRA 3235
 BIEBER SIERRA 2145

	BW	WW	YW	Milk	TM	Stay	BF	REA	MAR
EPD	-1.8	42	68	13	34	12	-0.01	-0.01	0.03
Wts.	68	685	1208						
Ratio	74	105	102	CED	9	CETM	7	HPG	

When we selected a sire to stay in our program our hope is that he will produce several sons and superior daughters that will replace him. Titan has done that with Hot Rock. Hot Rock is a smooth made, good fronted bull that's really correct. Big Mac and he are maternal brothers adding to the prepotency in this package.

2003 Spring RAAA Averages

BW: 0.7 WW: 29 YW: 51 Milk: 15 TM: 30 Stay: 9 BF: -0.01 REA: -0.05 MAR: 0.04 CED: 4 CETM: 3 HPG: 7

Red Angus Reference Sires

~7~



BUF CRK Vaquero 4572

BUF CRK VAQUERO 4572

04/19/1996 BUF4572 100% 1A Red Angus
 RED QUANTOCK 27M
 BUF CRK 27M-1255
 BUF CRK VAQUERO 1626 BUF CRK HALL 662
 COMSTOCK SIXPACK 170
 BUF CRK LANA 1268
 BFLO CRK LANA 410
 RCN CANYON CHIEF
 BJR C-CHIEF 811
 BJR LAKOTA 356-416
 MRM 2206-8468-8809 BFLO CR VC CHIEF 105
 MRM VC105 8223 8468
 MRM 8016 1802 8223

	BW	WW	YW	Milk	TM	Stay	BF	REA	MAR
EPD	3.4	46	77	7	30	10	-0.02	-0.04	-0.36
Wts.	82	710	1212						
Ratio	101	120	115	CED	1	CETM	8	HPG	7

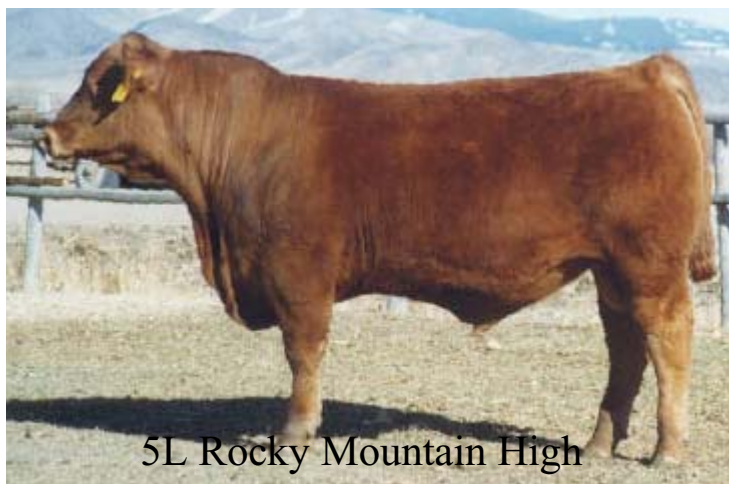
Ron saw Vaquero at 5L and was quite impressed. He is packed full of red meat. Vaquero's growth is in the top 10% of the breed and his calves show it. We are sure that you will be impressed with the Vaquero sons and their style and production.

5L ROCKY MOUNTAIN HIGH

02/26/1999 FLR1089 100% 1A Red Angus
 BUF CRK 27M-1255
 BUF CRK VAQUERO 1626
 BUF CRK LANA 1268
 BUF CRK VAQUERO 4572 BJR C-CHIEF 811
 MRM 2206-8468-8809
 MRM VC105 8223 8468
 BFLO CR VC CHIEF 105
 GLACIER LOGAN 210
 GLACIER REBALAS
 LEACHMAN MONU 2X 8096
 5L ADINA 293-525
 5L ADINA 109-293
 5L ADINA 13-109

	BW	WW	YW	Milk	TM	Stay	BF	REA	MAR
EPD	-0.6	28	46	17	31	12	-0.01	-0.06	-0.03
Wts.	85	764	1280						
Ratio	103	114	108	CED	3	CETM	9	HPG	

Rocky Mountain was the pick of the crop at 5L in their 2000 sale. He fits his sire's pattern having lots of meat and muscle. His sons have the same look with maternal reliability and marbling guaranteed by his Logan sired dam.



5L Rocky Mountain High



JHE Canyon Hawk 1062

JHE CANYON HAWK 1062

02/23/1992 JHE1062 100% 1A Red Angus
 BJR BLACK HAWK
 BJR RED HAWK 704
 BJR QUEEN B 704
 BJR HAWK-EYE 104 RCN CANYON CHIEF
 BJR DAKEL 830-967
 BJR DAKEL 625-231
 SAYRE PATRIOT
 BJR EXCEL-A-TOR
 ANKY B999 LASS 54374
 BJR CHERABLE002-121 RCN CANYON CHIEF
 BJR CHERABEL830-8319
 SNST CHEROBELLE

	BW	WW	YW	Milk	TM	Stay	BF	REA	MAR
EPD	0.7	33	57	14	30	5	-0.01	0.62	0.10
Wts.	84	691	1187						
Ratio	106	107	108	CED	2	CETM	-4	HPG	6

Canyon Hawk is a bull that has caught the respects of many breeders this past year. He is the highest bull in the breed for Ribeye with Marbling in the top 20% of the breed by producing great daughters. If you have been to our sales you know that the past few years some of the top bulls to sell are out of Canyon Hawk daughters. Ron really liked Canyon Hawk because even as a yearling he was extremely masculine. Canyon Hawks progeny will be around for years to come (via AI) even though he is gone. The sons this year are 18 month old bulls and will have age advantage and maturity in the breeding pasture.

2003 Spring RAAA Averages

BW: 0.7 WW: 29 YW: 51 Milk: 15 TM: 30 Stay: 9 BF: -0.01 REA: -0.05 MAR: 0.04 CED: 4 CETM: 3 HPG: 7

Red Angus Reference Sires

BIEBER NEW DAY 7247

02/12/1999 RAB7247 100% 1A Red Angus
 BJR HI ROLLER 211
 BJR EASY RIDER 781
 BJR DIPY DO 355-809
 BJR MAKE MY DAY 981 BJR FIRE-MAN 0150
 BJR TOW KANA 117-710
 BJR TOWKANA 355-71L
 BJR HAWK-EYE 104
 JHE CANYON HAWK 1062
 BJR CHERABLE002-121
 BIEBER EUCLA 6713 BIEBER DESIGN 1325-082
 BIEBER EUCLA 3670
 BIEBER EUCLA 3240

	BW	WW	YW	Milk	TM	Stav	BF	REA	MAR
EPD	-2.7	18	40	21	30	8	0.00	0.02	0.34
Wts.	72	608	1248						
Ratio	93	104	108	CED	10	CETM	-2	HPG	

New Day has a great deal to offer cattlemen with calving ease in the top 10% of the breed, Marbling in the top 2% of the breed, and the top 10% in the breed for Milk. All positive numbers to produce breed leading females. His calves have lots of style and are equally as good on calving ease. New Day's pedigree combines the top sire in the breed for Marbling, BJR Make My Day, and the top sire for Ribeye Area, JHE Canyon Hawk. With generations of ancestors in his pedigree he puts together one of the best carcass combinations in the breed.

BRAR cows on corn stalks thriving on low quality feed—doing their part to keep our Ranch more profitable.



The Amazing Red Angus Cow

VGW RAMBLER 1000

02/01/1994 VGW404 100% 1A Red Angus
 CV FOUR TIMES
 FCC RAMBO 502
 COPPER LASS 2392
 BJR RAMBLER 5162 BJR YOGO 002-104
 BJR GOLDI 355-1122
 BJR GOLDI 1706-856
 UMPIRE 1000
 LMB UMPIRE 1000-Z22
 LEACHMAN MINRVNA3248
 VGW UMPIRE YUMA 9266 ROCK CREEK KING
 VGW KING YUMA 9045
 VGW TOPJACK 533

	BW	WW	YW	Milk	TM	Stav	BF	REA	MAR
EPD	-5.3	20	39	24	34	12	-0.03	-0.23	0.15
Wts.	72	675	1098						
Ratio	89	110	113	CED	19	CETM	6	HPG	11

Rambler wins the prize for the most correct bull in the breed and his progeny have verified that. Rambler's first daughters have great udders and maternal champions. They are moderate framed and as Brent Lonker said, "They look like they will be some of the best females in the breed." Rambler's progeny are well balanced and we have mated him to cows that put it all together. Rambler produced the high selling group of sons in last year's production sale.



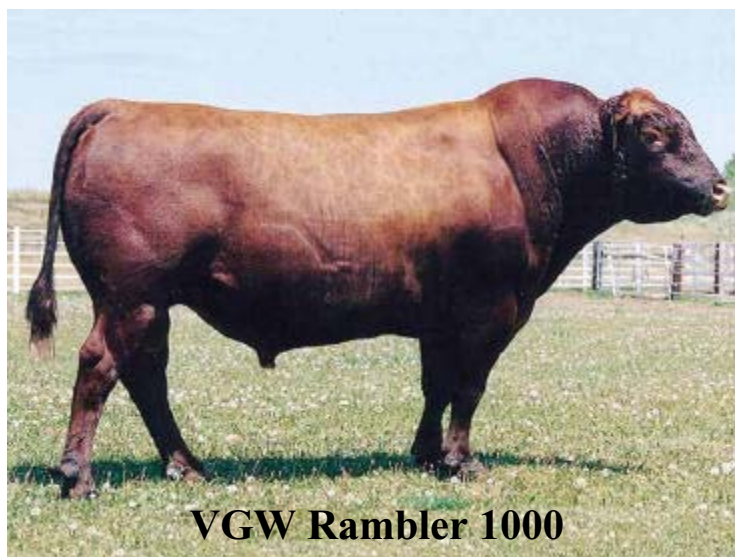
LCHMN Top Billing 1854F

LCHMN TOP BILLING 1854F

03/02/1996 JHL1854F 100% 1A Red Angus
 RCN CANYON CHEIF
 COPPER TOP CHIEF 301
 DORY 155
 LEACHMAN RED TOP 8658 LEACHMAN PRF-R012
 LEACHMAN MARGE 7045
 PRF MARGE N395
 JHL DYNAMO 417
 RCN DYNAMO 614
 RCN INDIGO-B4018
 LEACHMAN FIREFLY6357 MIDLAND CHIEF J4121
 LEACHMAN FIREFLY5035
 LCHMN FIREFLY 2341

	BW	WW	YW	Milk	TM	Stav	BF	REA	MAR
EPD	-0.4	30	53	17	32	7	-0.01	0.17	-0.18
Wts.	66	538	1078						
Ratio	ET	ET	ET	CED	9	CETM	2	HPG	2

Top Billing consistently brings in progeny that increase the opportunity for profit. His daughters are outstanding producing a average WW ratio of 103. His daughters are great cows with outstanding udders We have many customers that have purchased sons and have had excellent results. Jonathan Fahl reports his Top Billing's son out weighed his AI sires calves even though they were younger!



VGW Rambler 1000

2003 Spring RAAA Averages

BW: 0.7 WW: 29 YW: 51 Milk: 15 TM: 30 Stav: 9 BF: -0.01 REA: -0.05 MAR: 0.04 CED: 4 CETM: 3 HPG: 7

Red Angus Reference Sires

BIEBER RED ROCK 7778

03/05/2000 RAB7778 % 1A Red Angus
 FCC RAMBO 502
 BJR RAMBLER 5162
 BJR GOLDI 355-1122
 GLACIER NYACK 688 BFLO CR VC CHIEF 105
 GLACIER RB-LS
 GLACIER HI-RB-LS
 RCN CANYON CHIEF
 BJR TOPPER 830-23L
 RED LUK NU-HONEY 23L
 BIEBER TINA 5243 PRF CHIEFLINE K589
 BIEBER 5303-K589
 ARA 6F 5303

	BW	WW	YW	Milk	TM	Stav	BF	REA	MAR
EPD	-0.4	20	40	20	30	13	-0.01	-0.16	-0.06
Wts.	98	674	1291						
Ratio	107	104	105	CED	5	CETM	4	HPG	

This Nyack son is a maternal brother to Bieber Boone 6927. His dam is a great cow with lots of great progeny through out the breed. These cattle will be highly maternal and have competitive growth. The RB-LS cowline is one of the leading lines in the Glacier herd making Red Rock's pedigree stacked for maternal traits.



Bieber Red Angus branding crew— making sure each and every calf is identified RAB. Did you know that RAB stands for Ronald Alfred Bieber?

BIEBER CHIEF NYACK 7819

03/10/2000 RAB7819 % 1A Red Angus
 FCC RAMBO 502
 BJR RAMBLER 5162
 BJR GOLDI 355-1122
 GLACIER NYACK 688 BFLO CR VC CHIEF 105
 GLACIER RB-LS
 GLACIER HI-RB-LS
 RCN DYNAMO 614
 RCN DYNAMO 732
 RCN LANA-CP 307
 BIEBER QUEEN 5457 BIEBER CHIEFTON 3080
 BIEBER QUEEN 4920
 BIEBER QUEEN 2815

	BW	WW	YW	Milk	TM	Stav	BF	REA	MAR
EPD	-2.4	18	43	23	32	13	-0.01	-0.08	-0.11
Wts.	93	652	1286						
Ratio	101	100	105	CED	8	CETM	2	HPG	

7819 is another mating of a great cowline in the breed. His dam has been in our flush program for several springs and brings in a great calf every fall. Nyack was a purchase by Spurr Farms last spring and we wish we had him back after we realized how good the females are.



GMRA Vermillion 796

GMRA VERMILLION 796

02/03/1997 GMRA796 100% 1A Red Angus
 RCN CANYON CHIEF 092
 BUF CRK CHIEF092-824
 BUF CREEK LOLA 628
 BUF CRK CHF 824-1658 BFLO CR VC CHIEF 105
 BFLO CRK CARRIE VC473
 BFLO CRK CARRIE 3391
 FCC RAMBO 502
 BJR RAMBLER 5162
 BJR GOLDI 355-1122
 GMRA LAKOTA 456 RCN COUNTERPOINT 538
 GMRA LAKOTA 129
 BJR LOKOTA 2476-560

	BW	WW	YW	Milk	TM	Stav	BF	REA	MAR
EPD	1.4	44	70	17	40	13	0	-0.01	-0.01
Wts.	94	724	1186						
Ratio	104	113	102	CED	7	CETM	4	HPG	5

Vermillion remains an extremely consistent sire. His WW and YW Growth numbers are in the top 15% of the breed. Year in and year out Vermillion is an all-round sire with an excellent pedigree and calves that consistently beat the average in the fall.

Where would Bieber Red Angus be without head lady, data entry, advertising guru, "Hello, Biebers" phone personality, and know-the-business-inside-and-out Lois Bieber? Here she is working hard to keep Bieber Red Angus information up-to-date!



2003 Spring RAAA Averages

BW: 0.7 WW: 29 YW: 51 Milk: 15 TM: 30 Stav: 9 BF: -0.01 REA: -0.05 MAR: 0.04 CED: 4 CETM: 3 HPG: 7